

INSTALLATION INSTRUCTIONS



This document provides a step-by-step guide to installing **Ruby In Steel** and all the software needed to use it when developing Ruby (or Ruby On Rails) applications...

SELECT AN INSTALLER

There are several alternative installation packages for different versions of Ruby In Steel. Some of the installation options will vary according to which package you are installing. Your choice of an installation package is determined by the following factors...

WHICH VERSION OF RUBY IN STEEL?

Different versions of Ruby In Steel - such as the Developer Edition and the Text Edition - offer varying ranges of features. Refer to the SapphireSteel Software web site for a comprehensive list of features in each edition.

WHICH VERSION OF VISUAL STUDIO?

You need to use the appropriate installer for Visual Studio 2005 or Visual Studio 2008 (standard edition or above) if you already have Visual Studio installed. If you do not own Visual Studio, you should download the All-In-One installer for Visual Studio 2008. This includes a free copy of Visual Studio 2008 for Ruby In Steel.

DO YOU NEED TO INSTALL RUBY, RAILS OR A DATABASE?

If you do not already have Ruby installed or wish to install other tools such as the Rails framework or the MySQL database, you should download an All-In-One installer. This provides options to install the tools and programs needed to program Ruby on its own or with the Rails framework ('Ruby On Rails').

UNZIP AND INSTALL

First, extract all the files from the installation Zip archive into a temporary directory (we'll call this the 'setup directory') on your hard disk.

If you have bought a licensed copy of Ruby in Steel, you may copy your license key (**key.bin**) into the setup directory (replacing the existing *key.bin* which installs the software as a time-limited trial).

Note: The Personal Edition does not require a key so *key.bin* is not supplied.

In the setup directory, run the file **SETUP.EXE**.

When the setup program starts you will be presented with a list of items. If you have downloaded the All-In-One installation package you will be given the choice of installing a number of optional components. If you have downloaded only the Ruby In Steel installer, some of the items in the installer will be grayed out.



Select the items you wish to install. If you are unsure which items to select, refer to the list below for guidance:

VISUAL STUDIO 2008

Select this if you do not already have a copy of Visual Studio 2008 (standard edition or above) installed. Note that Ruby In Steel cannot be installed into any Visual Studio 'Express' edition. If you do have a copy of Visual Studio 2008 installed, uncheck the checkbox and Ruby In Steel will install itself into your existing copy of Visual Studio 2008.

RUBY

Select this if you do not have Ruby (version 1.8.6) installed.

MYSQL

Select this if you plan to do Ruby On Rails development and you do not have a copy of the MySQL database server and tools installed. If you do not plan to use Rails - or some other Ruby framework - you probably won't need MySQL.

RAILS

Select this if you plan to do Ruby On Rails development and do not already have the Rails framework installed. This will download and install either Rails 1.2.6 or the latest version of the Rails 2.x framework depending on which radio button is checked. It may also update other components if required. You need to be connected to the Internet at this time.

Which version of Rails...?

Rails 2 is the newest version of the framework. However, many of the existing books and tutorials are based on Rails 1. If you are using a reference book based on Rails 1, install **Rails 1.2.6** (you can install Rails 2 later). Otherwise, install **Rails 2.x**.

RUBY IN STEEL

Select this to install Ruby In Steel (you must have Visual Studio 2008 installed at this time - this may be either an existing installation or a copy installed by this setup program as long as the Visual Studio 2008 option is checked).

To begin installation, click the *Install* button.

The actual features installed now will depend on the options that you have selected.

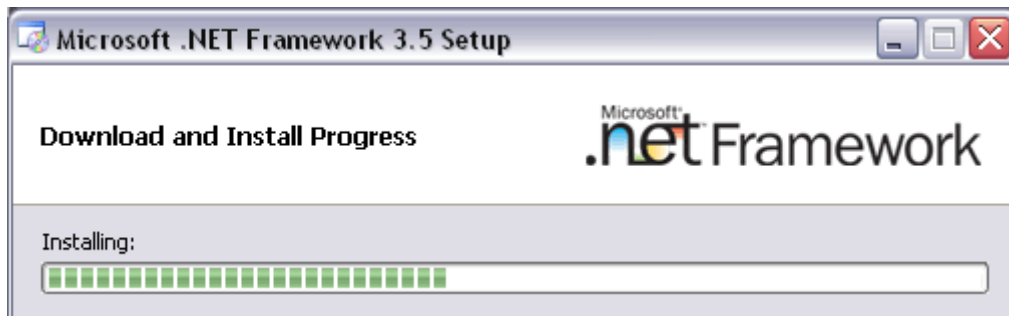
IMPORTANT: Some of the options described below will only be available if you are using the All-In-One Installer with Visual Studio 2008.

Installing The Software

The following assumes that all items are selected.

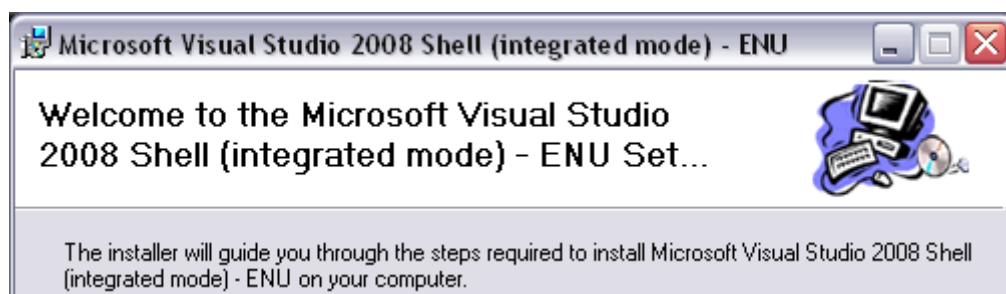
VISUAL STUDIO 2008

I) THE .NET FRAMEWORK



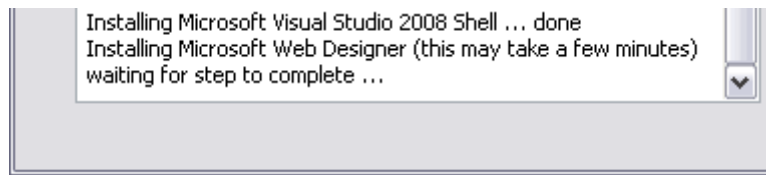
Visual Studio 2008 requires the .NET 3.5 framework. If this is not already installed, you will be prompted to install it now. You must have an Internet connection to download the framework from Microsoft. The download size is about 60MB so, depending on the speed of your connection, this may be a lengthy download. You will need to respond to a dialog box to accept the terms of the license during this installation. Click the *Exit* button on completion.

II) VISUAL STUDIO



When the .NET framework installation has completed, the Visual Studio 2008 installer will start. You will need to click 'Next' buttons to go through a few dialogs, accept the license terms and accept the default installation location (or browse to a different one). When the installation has completed, click *Close* to exit.

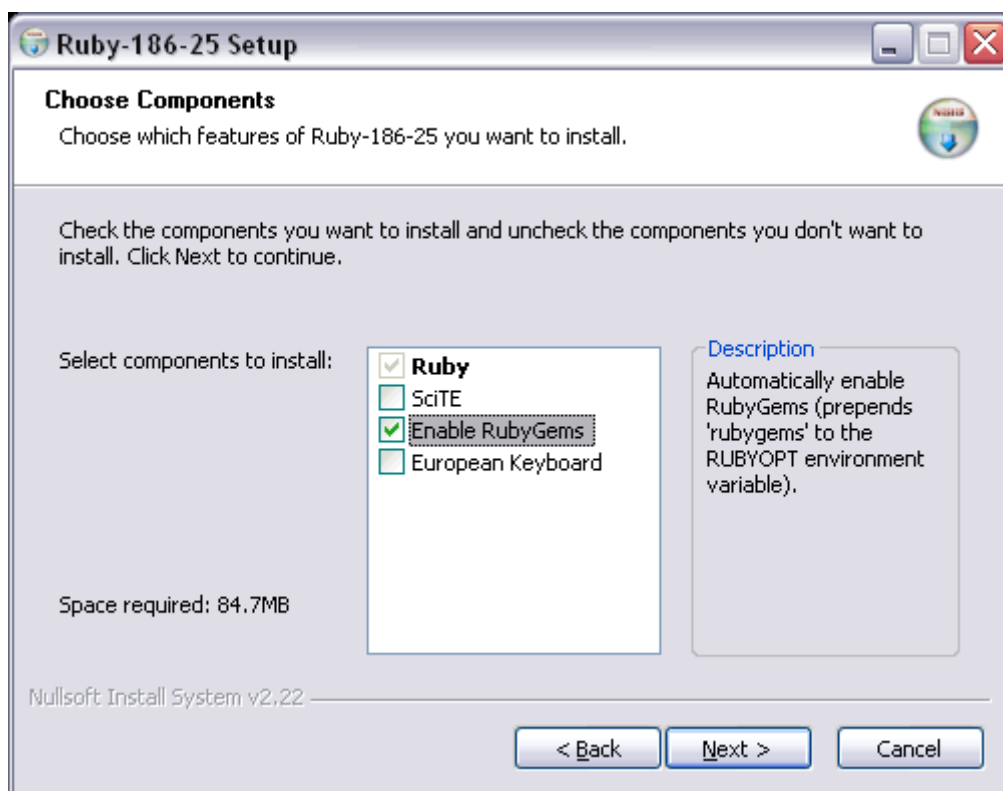
III) MICROSOFT WEB DESIGNER



Following the installation of Visual Studio, the web design components will be installed. This is done automatically and you will not need to respond to any dialog boxes. The status box in the Ruby In Steel Installer provides feedback on this stage of the installation....

RUBY

Next comes the installation of the Ruby interpreter. Once again you will be asked to accept the license agreement.



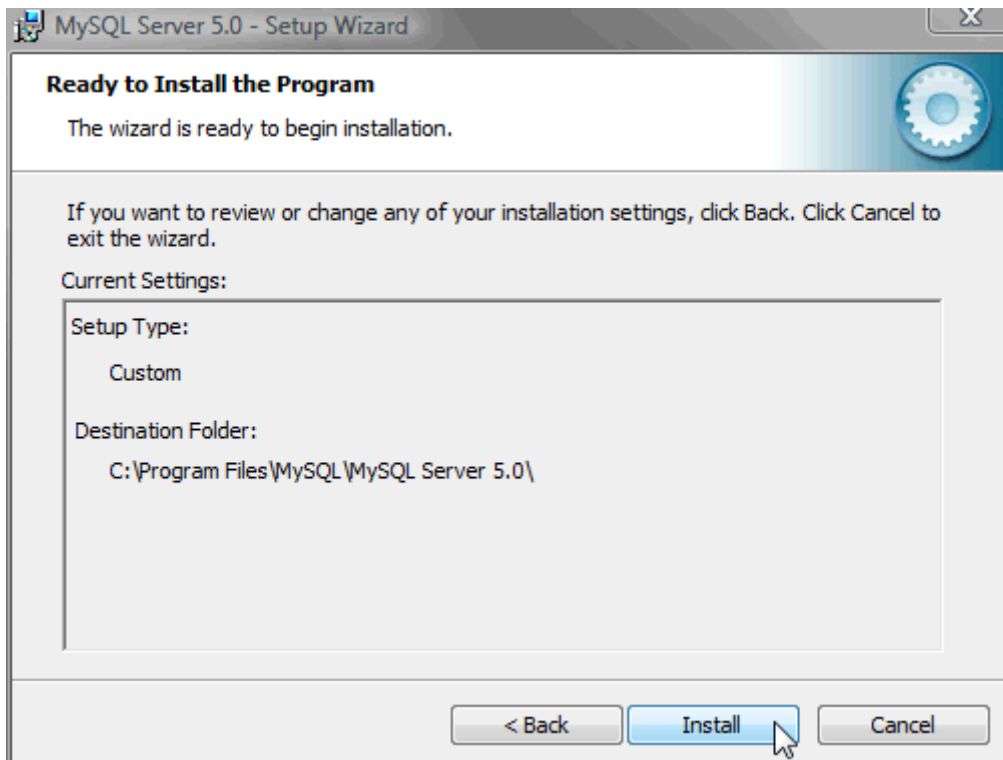
When you are asked to choose components, you should make sure that RubyGems is checked. SciTE (a lightweight programmers' editor) is optional and may be checked or unchecked as you wish. Then click 'Next'. You will be prompted to choose an installation location for Ruby - the default is 'C:\ruby'. Either browse to a new location or accept this default. Click 'Next' and then 'Install'. When completed click the 'Next' and 'Finish' buttons to close the dialogs.

MySQL

The MySQL Setup wizard starts.

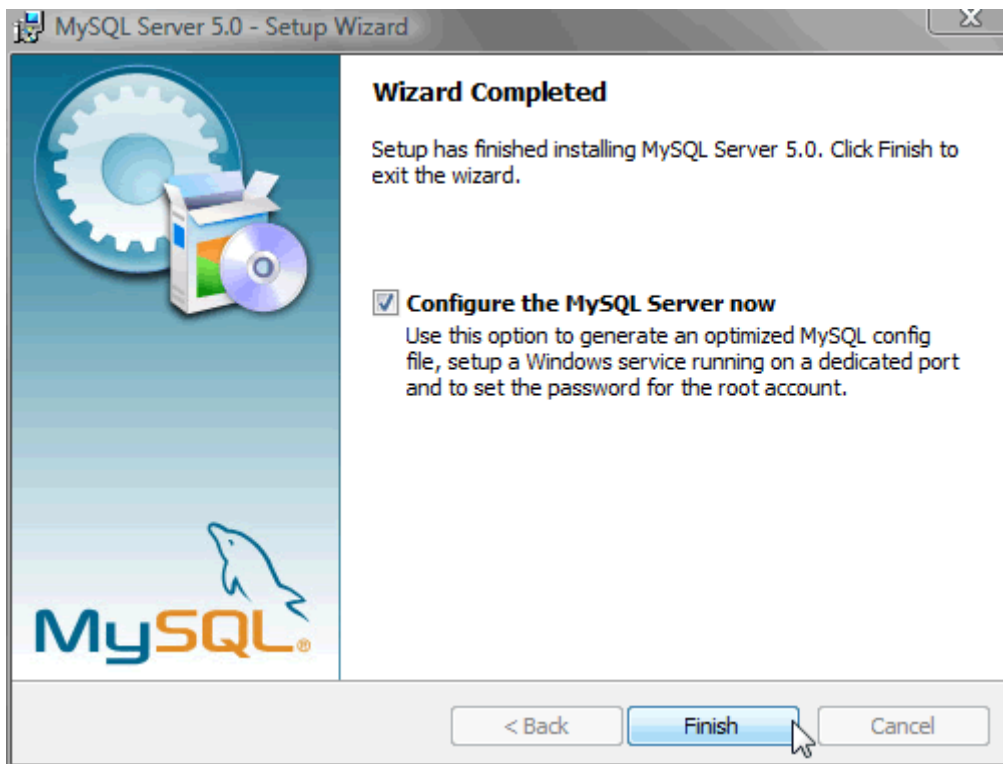


Click 'Next' to begin. Unless you have special configuration requirements, we suggest you select the *Typical* installation when prompted. Click 'Next'.



Click 'Install'.

When you are asked if you wish to create a MySQL account you may select 'Skip sign-Up'.



When the Wizard completes, leave 'Configure MySQL Server' checked and click 'Finish'. The Configuration Wizard dialog now appears. Click 'Next'.



Select 'Standard Configuration'. Click 'Next'.



In the next dialog, leave the default options selected (i.e. *Install As Windows Service*; *Service Name* = 'MySQL' and *Launch the MySQL Server automatically*). Then click *Next*.

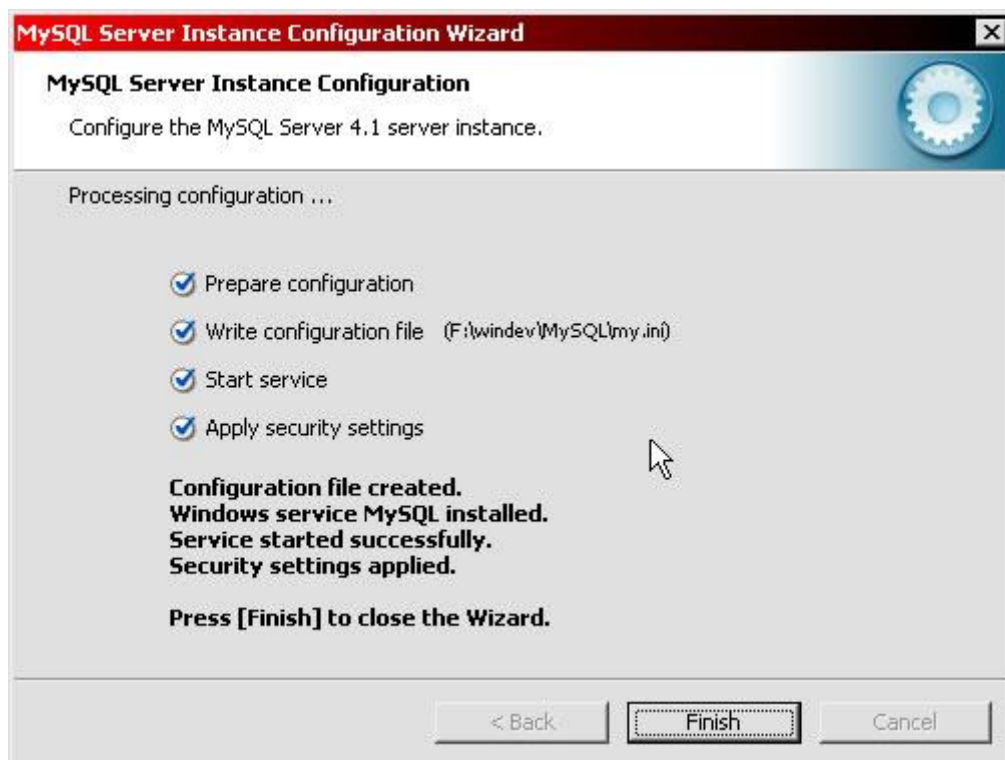


In the next screen, leave '*Modify Security Settings*' checked and enter the same password (of your choice) into the first two text fields. You will need this password later so remember it

or write it down in a secure location. If you may need to access MySQL from another computer you can check 'Enable root access from remote machines'. Then click *Next*.

Note: The default MySQL user name is '**root**'. The password is the one you just entered. You will need both these items of information later when creating Rails applications.

The next screen just gives you some information about the tasks that are about to be performed. Click the *Execute* button.



At the end, click *Finish*.

MYSQL TOOLS

The Installer for MySQL tools now begins. We suggest you accept all default options and do a '*Complete*' install when prompted.

At the end of this step, click '*Finish*'.

RAILS

NOTE: You will need an Internet connection to download and install the current version of the Rails web framework for Ruby.

A message will ask you if you wish to proceed with the installation of Rails. If you are ready, click 'OK'. This may also download and install or update other components such as RubyGems if required.

Each item installed will launch a command prompt in a window (i.e. you may see the command window more than once). Do not close this window until prompted by the message 'Press any key to continue...' Then press a key to close the command window.

RUBY IN STEEL

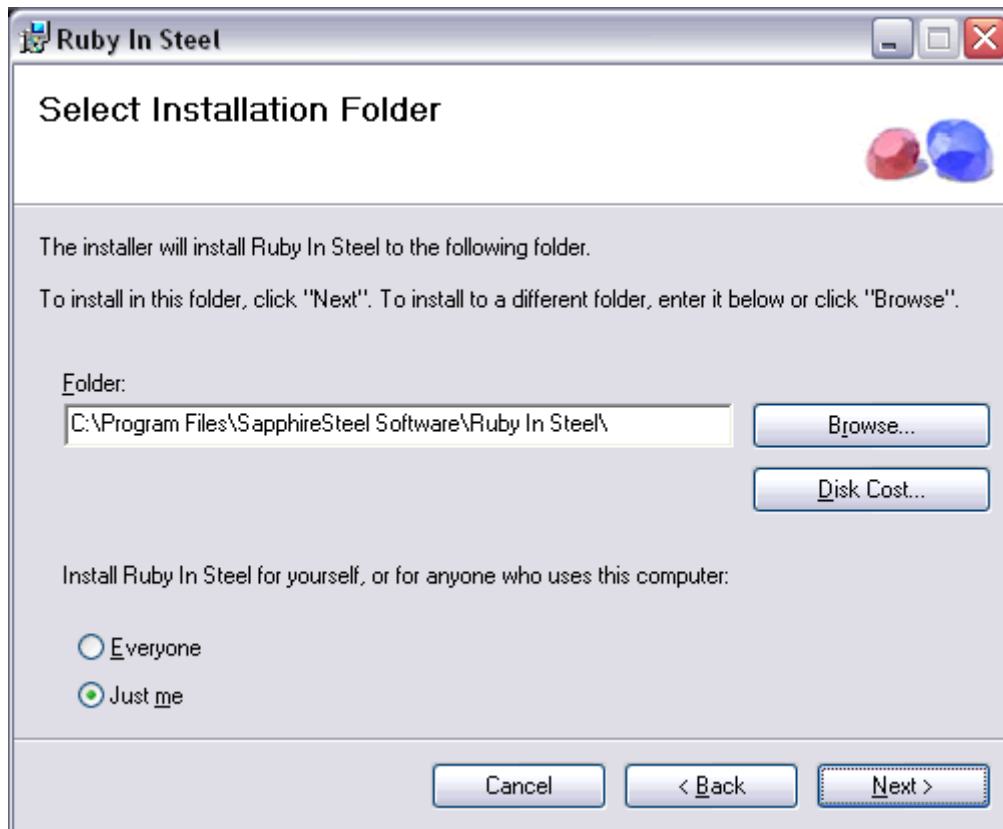


The Ruby In Steel splash screen appears (the appearance of this screen will vary according to the edition being installed). Click 'Next'.

A Welcome screen appears. Click 'Next'.

Then the license is displayed. Read this and, if you are happy with the terms, click 'I Agree' then click 'Next'.

You may now select an installation folder.

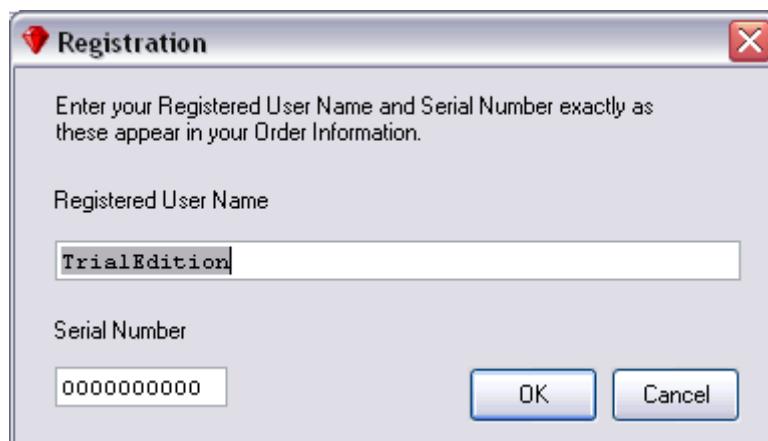


You may either accept the default installation folder or browse to a different one. Click 'Next' and then 'Next' once again in the subsequent dialog to begin the software installation.

Mid-way through the installation of Trial or Commercial editions you will be prompted to enter your license details.

NOTE: You will not be prompted to register the Personal Edition.

By default the Trial or Commercial software installs as a Trial Edition.



If you have bought a license to Ruby In Steel, and you have copied your **key.bin** file into the setup directory (as explained at the start of this guide), you may now unlock the software by entering your registered user name and your serial number into the appropriate fields. Be sure to enter the *exact* registration details - all characters including whitespace are significant as is the case of each character. Alternatively, you may install the software as a Trial Edition and unlock it after installation (as explained below). Click *OK* to close the Registration dialog. The installation will continue. *Close* and *Exit* the installer dialogs when the installation has completed.

If The Installation Fails

If any component of the installation fails to install or if you cancel its installation you may attempt a reinstall by running **Setup.exe** and ensuring that only the specific item(s) which you wish to install are checked before starting the installation process.

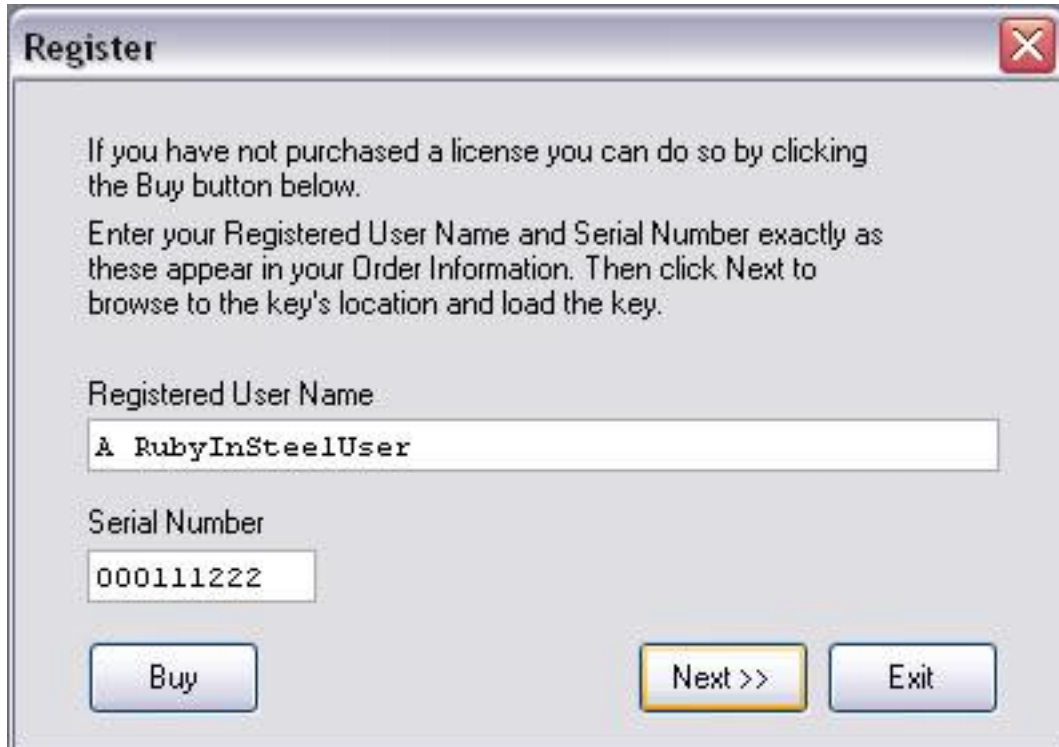
Unlocking the Registered Edition After Installation

If you have bought a license to Ruby In Steel and did not unlock the software during installation, you may unlock it from inside Visual Studio by following these steps...

Select *Register* from the *Ruby* menu.



In the dialog box, enter your registered user name and serial number. Note that all characters and cases are significant - including whitespace and upper/lower case.



Click *Next*.

A browser dialog will now open. You should locate the key.bin file which was sent to you when you registered Ruby In Steel. Select this file and click: *Open*.

If all the registration details and the **key.bin** file are correct, a message will inform you that the software has been registered. If the registration details or the key.bin file are incorrect, you will be prompted to check all the details and try again. Please verify that you have entered your registered name and serial number exactly and that you have selected the **key.bin** sent with your license and not the key.bin that was installed with the original (Trial mode) software.

For more information on using Ruby In Steel, please read the PDF Manual/User supplied with the software.